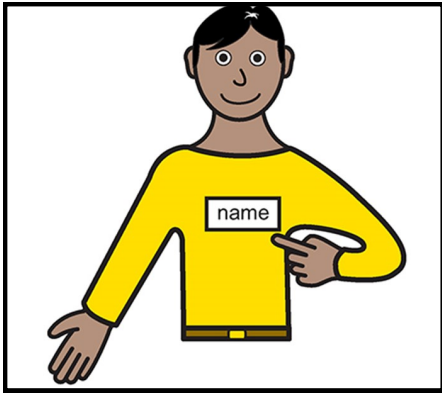


Section 5.2 Mental Health Act 1983



Your name

.....



The approved clinician in charge of
your assessment and treatment is :

.....

They are a specialist in mental
health.



You have come to a mental
health hospital called

.....

You are on..... Ward

Phone number



You have been put on section 5.2 of the Mental Health Act.

Mental Health Act 1983



Date and time your section started

.....



This leaflet is to help you understand what this means.

A qualified member of staff should read through this leaflet with you.

They will be able to answer any of your questions.

Why am I in hospital?



A doctor says you are unwell and is worried about your safety because

.....

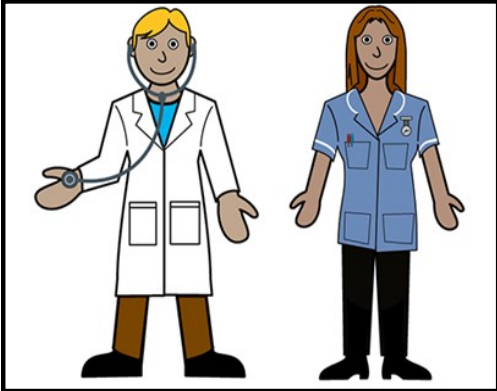
So they have put you on a section 5.2 of the Mental Health Act.



This means that you **MUST** stay on the ward.



Even if you feel the section is wrong, for now it will continue.



The ward staff want to keep you safe and give you the support you need.



Mental Health Act 1983

You can be kept in hospital because you are on section 5.2 of the Mental Health Act 1983.



The Mental Health Act 1983 is a law.

How long will I be in hospital?



You can be kept in hospital for up to 72 hours.

72 hours is 3 full days.

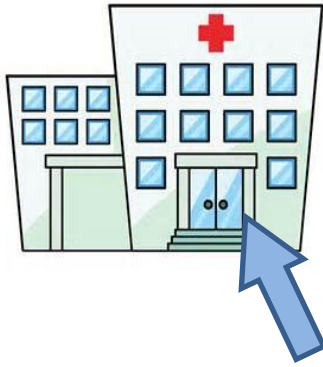


If you are better before 3 days your doctor could take you off your section.

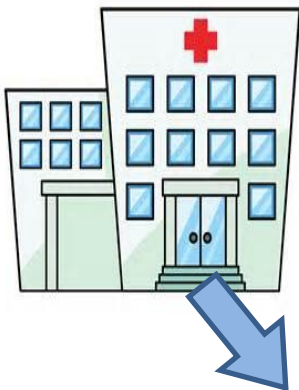
This means you could go home.



If you try to leave before the doctor says it is ok, you will be stopped.

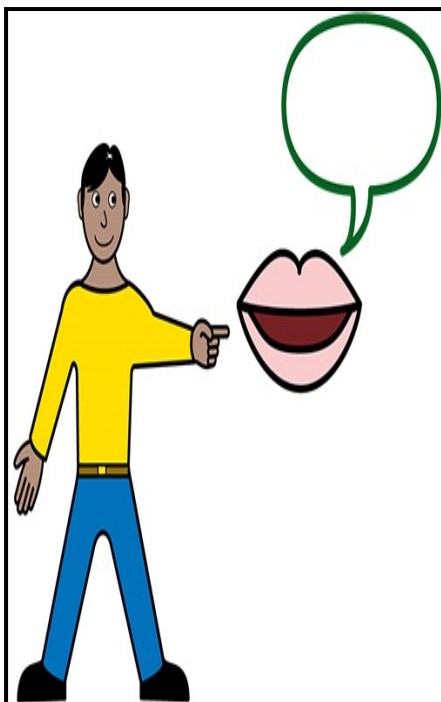


If you leave hospital before the doctor says it is ok, you will be brought back.



If you do want to leave the hospital for a short time, talk to your doctor.

They need to decide if it is safe.



You have a **RIGHT** to an independent mental health advocate sometimes called an IMHA.

- They can help you understand your rights and speak up on your behalf
- They can help you make a complaint
- They do not work for the hospital and the service is free and confidential

If you would like an advocate, speak to the staff, who can give you more information.

What happens next?



You will be assessed by another doctor.

The doctor will decide if you still need to stay in hospital.



If you do need to stay your section might be changed.

You will be given another information leaflet if this happens.



If a second doctor does not assess you before the end of the 3 days you can leave or stay in hospital.



You can not appeal against your section 5.2